



Lindsay James holds town hall meeting in Waukon ...

Lindsay James, Democratic candidate for the U.S. House of Representatives, held a town hall meeting at Lid's Bar & Grill in Waukon Saturday, December 6. James is currently serving in the Iowa House of Representatives, representing Dubuque County in District 99.

As an ordained Presbyterian clergy, James has been a chaplain to young people attending colleges in Dubuque. She said she is running to serve the people in the 2nd Congressional District because her deeply held moral convictions call her to fix the injustices Americans are facing. She discussed how people are living paycheck to paycheck, and cannot afford healthcare or medications or groceries or pay their energy bills. Her commitment is to be an advocate for everyday people. Submitted photo.

REAL ESTATE & AUCTIONS

Looking for an Audience?

CLICK US

www.waukonstandard.com

FAIR HOUSING LAWS: The Federal Fair Housing Act prohibits discrimination in the sale, rental, leasing and financing of housing, as well as discriminatory advertising, on the basis of RACE, SEX, COLOR, RELIGION, NATIONAL ORIGIN, MENTAL or PHYSICAL HANDICAP, or FAMILIAL STATUS. Every housing advertisement published in this newspaper is subject to the Fair Housing laws.

HOME FOR SALE by Owner



14 2nd St. NE, Waukon
3 bedrooms, 2 baths
(563) 380-4695

NOTICE OF AUCTION

Owner: Estate of Eun Hee Kuhn, Vanessa Smythe and Suzanne Hanai offer the below real estate in Winneshiek County for sale

Parcel No. 1 (191045101800 & 191045101700)

Lot 1 and 2 in Block Four in Kuhn's Second Subdivision in the Southwest Quarter of the Southeast Quarter (SW 1/4-SE 1/4) of Section Ten, Township 96 North, Range 8 West of the 5th P.M., in the City of Ossian, Iowa.

Parcel No. 2 (19333000200)

The Northeast Quarter of the Southwest Quarter (NE 1/4-SW 1/4) in Section 33, Township 96 North, Range 8 West of the 5th P.M., Winneshiek County, Iowa. Consists of Approximately 37.8 acres.

Parcel No. 3 (191512500900) - 1385 Co Rd W-42, Ossian, Iowa - Home & Acreage, approximately 11.13 acres. Home includes central heat and air, along with a newer kitchen, bath and roof.

Lot 2A Kuhn's Subdivision in the Northeast Quarter of the Northwest Quarter (NE 1/4 - NW 1/4) of Section 15, Township 95 North, Range 8 West of the 5th P.M.

Parcel No. 4 (191030001300, 191030001200, 191045102200) Approximately 46.65 acres

Remainder of Parcel B Kuhn's Second Subdivision in the Southwest Quarter of the Southeast Quarter (SW 1/4 - SE 1/4) of Section Ten, Township 96 North, Range 8 West of the 5th P.M., in the City of Ossian.

And also
The West Half of the Southeast Quarter of the Southwest Quarter (W 1/2-SE 1/4 SW 1/4) of Section 10, Township 96 North, Range 8 West of the 5th P.M.

And also
The East Half of the Southeast Quarter of the Southwest Quarter (E 1/2 - SE 1/4 -SW 1/4) of Section 10, Township 96, Range 8 West of the 5th P.M., except that 487 square feet thereof which is located in the Southeast corner and is platted as a part of Lot 4, Block 1, Kuhn's Subdivision in the Northeast Quarter of the Northwest Quarter in Section 15, Township 96 North, Range 8 West of the 5th P.M.

Immediate Possession for Crop Year 2026

METHOD, TIME & PLACE OF SALE:

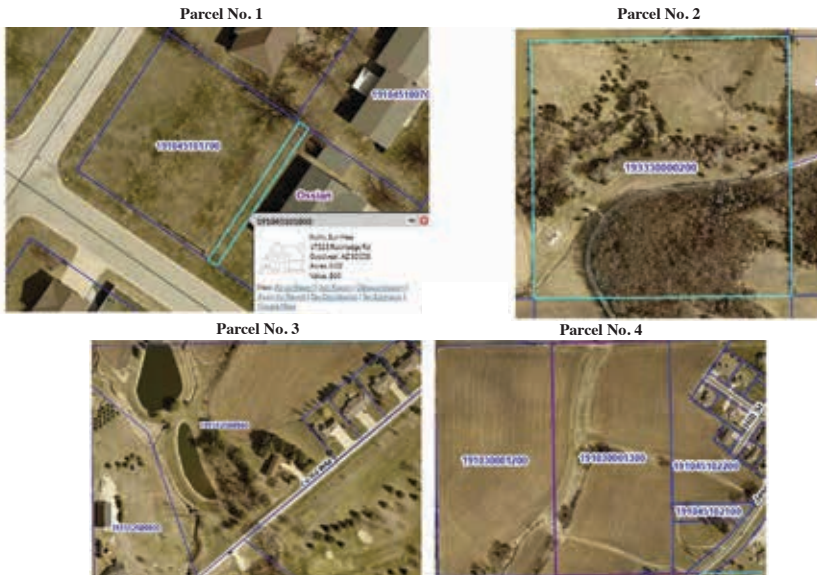
Sealed bids will be received at Elwood, O'Donohoe, Braun & White, West Union until 12:00 P.M., on Friday, January 16th, 2026. All bids must include the bidder's mailing address and telephone number. The top five (5) bidders for each parcel, will be contacted to attend the final sale where each will be given the opportunity to raise his/her bid in person. The seller reserves the right to reject any and all bids. Sale will commence at 2:00 P.M. on Thursday, January 22th, 2026 at Elwood, O'Donohoe, Braun & White, 125 N. Vine Street, West Union, Iowa LUMP SUM. No per acre bids.

TERMS OF SALE: The successful bidders will be required to pay 10% down on the date of sale. Balance of purchase price will be paid on March 15, 2026. Successful bidders must have letter of credit for the balance of the purchase price. Announcements made the day of sale take precedence.

At any time after December 12, 2026, interested parties may examine all available information regarding the parcels in the office of Elwood, O'Donohoe, Braun & White at 125 N. Vine Street, in West Union, Iowa.

The information included here has been obtained from sources believed to be reliable; however, it may be subject to errors, omissions, price changes or withdrawal notice. While we do not doubt its accuracy, we have not verified it and make no guarantees, warranty or representation. You and your consultants should conduct a careful independent investigation of the property to determine suitability.

Open House at the home on January 10th from Noon until 4 p.m.



Bridge demolition...

Continued from Page 1

This includes segments of Iowa Hwy. 9/Iowa Hwy. 26, Front Street, and several cross streets and alleys from downtown Lansing to the marina. There will be no parking or pedestrians allowed in the restricted zone. See the map image accompanying this article on the front page for details.

- The City of Lansing will impose street closures and parking restrictions starting around 6 a.m. Friday, December 19. Iowa 9/Iowa 26 will close around 8:45 a.m. before the implosion to ensure the area is clear, and will reopen about 30 minutes after the implosion as crews inspect the blast zone and the remaining bridge structure. Detour signs will be posted to divert through-traffic. The Iowa 9/Iowa 26 detour will be shown on Iowa 511 (www.511ia.org).

- A 1,000-foot restricted zone will be enforced on the river, as opposed to the 850-foot restriction on land. DOT officials explained that the difference in those distances is due to how the energy waves from the implosion process travel over land vs. over water.

- State and local officials strongly advise that onlookers do not stand on the ice that has formed on the river. Ice on the Mississippi River can be extremely unstable due to currents and warmer water temperatures.

- The free car ferry service will end operations at 6 p.m. Thursday, December 18, to facilitate preparations on and around the bridge. The car ferry will resume operations the morning of Monday, December 22. Additional delays may be necessary to clear debris from the river channel.

- In Wisconsin, the entire ferry landing area will be closed to the public once car ferry service ends December 18, as the landing is within the 850-foot restricted zone. There will be no public viewing areas

on the Wisconsin side. The Big Slough and Winneshiek boat landings will be closed December 18 and are anticipated to re-open the evening of December 19. Wisconsin Hwy. 82 will be closed at 6 p.m. Thursday, December 18 once the ferry service shuts down and is anticipated to re-open the evening of December 19. The ferry landing area will remain closed until the car ferry re-opens December 22.

- The U.S. Army Corps of Engineers will have already closed the Mississippi River to commercial traffic prior to the implosion. The river will also be closed to recreational boat traffic inside of the restricted zone.

- The project contractor and subcontractors are contacting all residents and property owners in the restricted area and providing voluntary home inspections and window protections. Residents will also be given instructions and timelines for shelter-in-place or evacuation options.

- The demolition contractor will sound an "all clear" long siren blast after 100% detonation is confirmed. However, this siren only signals release of the work zone to the primary project contractor, who will then perform final safety checks. The restricted zones will remain in place for at least 30 minutes following the implosion.

- The project team has coordinated a track outage with the Canadian Pacific Kansas City Southern Railroad and there will be no trains through Lansing for approximately four hours the morning of December 19.

- The implosion may be loud. Anyone with hearing sensitivity is advised to remain inside and use ear protection if needed.

The demolition could be delayed due to weather or other considerations and the project team has secured Saturday, December 20 as a back-up date if needed. The Iowa DOT and Wisconsin

DOT will issue any updates about delays or cancellations if those situations occur.

DOT and project officials further noted that the implosion process will involve more than 500 explosive charges strategically placed within the bridge structure. They explained that even with that many charges being detonated, all will take place within milliseconds of one another in a strategic series - looking as if it were to all happen at once - to allow the bridge to collapse and fall into the river below as planned.

Officials say that once the structure has collapsed into the river and the scene has been approved as being safe, crews will begin to remove the metal structure from the river, cutting the fallen structure pieces with a torch as necessary to facilitate their removal. Once removed from the river, those pieces will be picked up and transported by Alter Metal Recycling to its scrap metal recycling facility in La Crosse, WI. Some of those fallen pieces have also been designated for preservation with various agencies throughout Iowa and Wisconsin.

For more information on the construction of the new Mississippi River Bridge as well as updates on the existing bridge status, go to iowadot.gov/lansingbridge. Individuals may also sign up to receive email updates and view the Facebook page at www.facebook.com/LansingBridge/. Information on the ferry is available at <https://iowadot.gov/lansing-carferry>.

The latest traveler information is available anytime through the DOT 511 system. Visit 511ia.org; call 511 (within Iowa) or 800-288-1047 (nationwide); stay connected with 511 on Facebook or X (find links at <https://iowadot.gov/travel-tools/iowa-511/511-social-media-sites>); or download the free app to a mobile device.

From Our Home to Yours,
Wishing you a Joyful Christmas Season!

Sweeney Real Estate