

POET donates to local Fire Departments

POET Bioprocessing-Shell Rock has donated \$4,000 each to the Shell Rock and Clarksville Fire Departments. The donations support the department's continued effort to keep the community safe.

"At POET, a core part of our mission is giving back to the communities we call home," said Kristin Clay, General Manager of POET Bioprocessing-Shell Rock.

"We are proud to support our local first responders and the critical work they do in keeping our community safe every day."

Shell Rock's department will use the funds to help purchase new firefighter bunker gear, and Clarksville's department will use the donation towards purchasing a fire truck and updating gear.

This donation is part of POET's ongoing commitment to being a strong community partner and giving back to the communities our teams call home. POET's Community Impact Grant Program is open until May 16; apply at <https://poet.com/grants/>.

Submitted by POET.



COURTESY PHOTO

POET Bioprocessing-Shell Rock has donated \$4,000 to the Shell Rock Fire Department. The department plans to use the funds to buy new firefighter bunker gear.



COURTESY PHOTO

The Clarksville Fire Department received a \$4,000 donation from POET Bioprocessing-Shell Rock. The firefighters plan to use the donation toward buying a fire truck and updating gear.

Dr. Troy Ivey named Chief Quality Officer at Waverly Health Center

Waverly Health Center (WHC) is pleased to announce Dr. Troy Ivey as Chief Quality Officer of WHC. Dr. Ivey has been a general surgeon for over thirty years, serving the Waverly community since 2013. This new role marks a transition from full time clinical practice to his new role in administration. He will continue to be part of the general surgery on call schedule.

"Dr. Ivey will play a pivotal role in driving clinical excellence, ensuring compliance with regulatory and accreditation standards," said Jodi Geerts, WHC Chief Executive Officer. "I am confident he will continue to build on established relationships with our patients, medical staff and clinical and operational leaders to support a culture of continuous improvement and person-centered care."

Dr. Ivey holds a bachelor's degree from Iowa State University and a medical degree from Des Moines University. He completed his surgery internship at Loyola University of Chicago and surgical residency at McLaren Greater Lansing, Michigan State University. Dr. Ivey is Board Certified by the American College of Osteopathic Surgeons.

"I am honored to be a part of the leadership team at Waverly Health Center. My focus will be set at oversight and strategic direction of quality outcomes and patient safety. I look forward to collaborating with our providers to assure ongoing quality and patient satisfaction," said Dr. Ivey. "The leadership team and all WHC employees are committed to providing high level care and an excellent patient experience. I am proud to be a part of that process."



DR. TROY IVEY
WHC CHIEF QUALITY OFFICER

W-SR School Board Members: A Guiding Light for Student Success

BY DAVID HILL

Waverly-Shell Rock Superintendent

May is School Board Recognition Month in Iowa—a time to celebrate and honor the dedicated individuals who serve as a Guiding Light for Student Success in our public schools. Sponsored by the Iowa Association of School Boards (IASB), this statewide recognition highlights the vital work of school board members who volunteer their time, talents and leadership in service to students, families and communities.

Here in the Waverly-Shell Rock Community School District, we are proud to recognize our school board members for their unwavering commitment to educational excellence. They invest countless hours in policy discussions, budget oversight, community engagement, and decision-making that directly supports the learning and well-being of more than 2,200 students. Their leadership also ensures that our dedicated staff have the guidance and support they need to serve students effectively.

Our current board members—President Charlene Wyatt-Sauer (Director District 1), Vice President Jes Kettleson (Director District 4), Dennis Epley (Director District 3), Jordan Shanks (Director District 5) and Shawn Ellerbroek (Director District 2)—bring thoughtfulness, integrity and a strong sense of purpose to their service. As elected officials, they accept significant responsibility and accountability, helping our district remain focused on what matters most: student success.

Earlier this school year, the Waverly-Shell Rock Board of Education was honored with the Team Achievement Award from the Iowa Association of School Boards. This prestigious recognition was presented in November 2024 at IASB's annual convention in Des Moines. Only 46 boards across the state received this honor, which celebrates high-functioning board-superintendent teams who demonstrate strong governance practices and a commitment to continuous improvement.



COURTESY PHOTO

SCHOOL BOARD RECOGNITION MONTH. The Waverly-Shell Rock Board of Education is pictured along with the district superintendent after accepting the prestigious Team Achievement Award at the annual convention of the Iowa Association of School Boards. The board includes Dennis Epley (District 3), David Hill (Superintendent), Jordan Shanks (District 5), President Charlene Wyatt-Sauer (District 1), Shawn Ellerbroek (District 2) and Vice President Jes Kettleson (District 4).



provement. IASB Board President Jesse Howard praised these teams as "beacons of leadership, ensuring their districts stay on course toward student success."

Across Iowa, more than 2,000 board members serve in school districts, AEAs and community colleges—volunteering their time to help shape the future of public

education. Their work, though often behind the scenes, leaves a lasting impact on students and communities alike.

To our Waverly-Shell Rock school board: thank you for being a guiding light for our students, staff and community. Your leadership matters, and your service is deeply appreciated.

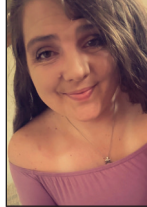
Natalie Koepke joins Bremer Co Fair Association

The Bremer County Fair will celebrate its 150th year this summer. The Fair Association wants to keep the public informed of what is happening regarding the fair. Here is the latest update.

Hi, I am Natalie Koepke, I am the daughter of Rick Koepke and Rhonda Koepke. I live on an acreage between Tripoli and Readlyn. When I was younger I was very active in 4-H and FFA. With that passion and drive I help with leading the Clover Explorers club. I also am the Open Beef Superintendent and on the fair board. I have enjoyed helping with the kids and being involved.

In my free time I raise my own beef cattle and help the younger generation with their beef cattle. With this I have decided to join the Bremer County Cattlemen to keep helping make our beef industry a success.

I am excited to continue to help on all the boards that I am on and keep helping these kids in the cattle industry. I also look forward to keep getting to know the people in the Bremer County community at the fairs.



NATALIE KOEPKE



HAIL DAMAGE?

CALL US FOR A ROOF/SIDING INSPECTION!

FAMILY OWNED, LICENSED, INSURED & TRUSTED SINCE 2001

YOUNG CONSTRUCTION

641-430-0655

SCAN TO SCHEDULE YOUR INSPECTION

SHOWROOM LOCATED IN MASON CITY

BREMER COUNTY

INDEPENDENT

BREMER COUNTY INDEPENDENT | VOLUME 167, ISSUE X
311 West Bremer Avenue, P.O. Box 858, Waverly, IA 50677-0858
319-352-3334 Waverly Newspapers ©2025

(USPS #063-940 - ISSN #08998698)
Published Tuesdays
Official Newspaper of: Bremer County, Waverly, Janesville, Readlyn, Shell Rock & Plainfield

Subscription Rates: Bremer and Butler Counties and other 506-507 ZIP codes
12 months - \$109.00
6 months - \$60.00
3 months - \$33.00
Over the Counter - \$2.50
The term lengths above reflect basic subscription rates without other surcharges. Due to the size and value of premium editions, there will be up to a \$4.00 surcharge on each date of publication of any premium editions. There will be no more than 6 premium editions per calendar year. Rather than bill you for an extra charge for premium editions, we will adjust the length of your subscription, which accelerates the expiration of your subscription when you receive these premium editions. There will also be a 99 cent service fee for each subscription renewal to cover postage, paper, handling, etc.

All other Iowa counties/U.S. states:
12 months - \$116.00
6 months - \$74.00
3 months - \$52.00

waverlynewspapers.com

Tracy Cummings PUBLISHER	Elizabeth Bingham EDITOR	Mira Schmitt-Cash REPORTER
Melaine Buzynski GENERAL MANAGER	DeAnn Meyer ADVERTISING	Cole Negen SPORTS REPORTER
James Barbutes CIRCULATION MANAGER	Carrie Wright GRAPHIC DESIGNER	Find us on Facebook

WAVERLY CITY WIDE

GARAGE SALES

FRI. AND SAT. JUNE 6-7, 2025

Place your garage sale ad in the Waverly Newspapers on our Special Garage Sale Page!

\$25 for up to 40 words!

Ads must be prepaid. Credit cards accepted. Include: Name, complete address, phone number, dates, times and items. All participating garage sale ads will be published on a page with a city map in the June 3rd Waverly Shopper and the June 3rd edition of the Waverly Newspaper.

BE SURE TO INCLUDE YOUR SALE DAYS AND ADDRESS IN YOUR AD!

DEADLINE: TUES., MAY 27

Bring your ad in or call us, along with payment, or email us your ad including your credit card information to legals@waverlynewspapers.com

311 W. Bremer Ave.,
PO Box 858, Waverly, IA 50677
319-352-3334